

## ENGINEERING BULLETIN

January 2, 2001

### AF2312 Replaces AF582

Hastings Filters is pleased to announce a new and improved Air Filter that will replace the AF582. Due to reports of difficulty installing the AF582 into some new Nelson housings, we have developed the AF2312. Our new AF2312 has an end cap with a smaller diameter to assure a proper fit in the newer Nelson housings, while maintaining a proper seal in the existing Donaldson housings.

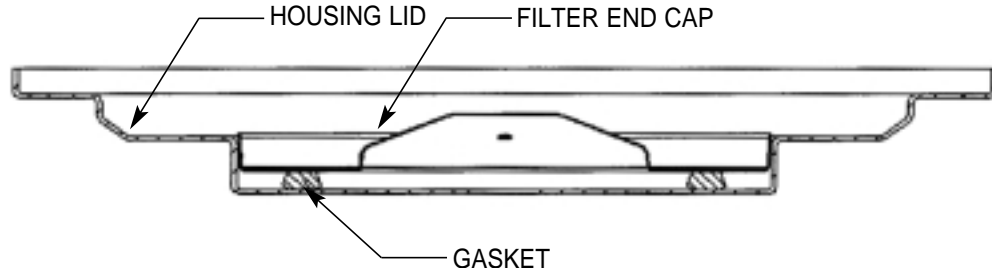
The need for this change in the end cap design resulted from the different designs of the two housings. The new Nelson housing

lid has a recess into which the top of the air filter fits and seals.

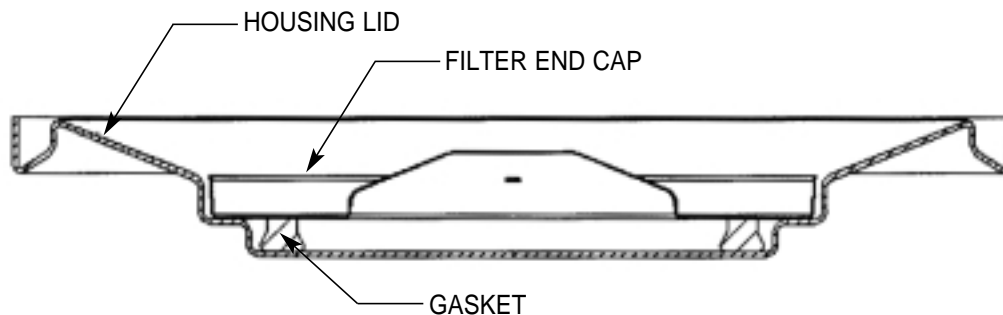
The larger diameter of the end cap on the AF582 would not fit properly into this recess. Please see the drawing below which illustrates the proper seating of the AF2312 in this recess of the Nelson housing.

The new Hastings AF2312 allows for a complete and proper seal on both Nelson and Donaldson housings.

The AF2312 was introduced in September 2000 to replace the Hastings AF582.



**NELSON ASSEMBLY**



**DONALDSON ASSEMBLY**

**If you have further questions,  
please contact our  
Service Engineering Team at (800) 887-8836.**